



# CARBON FOOTPRINT

**Executive Summary Report**

**Baseline Year 2025**

Measuring Today. Reducing Tomorrow.



## 1. Executive Summary

This report presents SETS' first carbon footprint assessment for the baseline year **2025**, providing a transparent overview of greenhouse gas emissions across all operational scopes and geographies to support informed decision-making and future mitigation planning.



Figure 1 Key Findings

## 2. Emissions by Activates

Emissions were analyzed by **major operational activities**, highlighting electricity use, business travel, employee commuting, and company-owned vehicles as the principal contributors to SETS' carbon footprint.

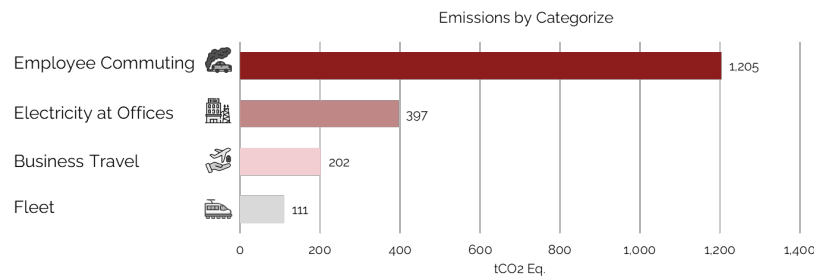


Figure 2 Emissions by Categories

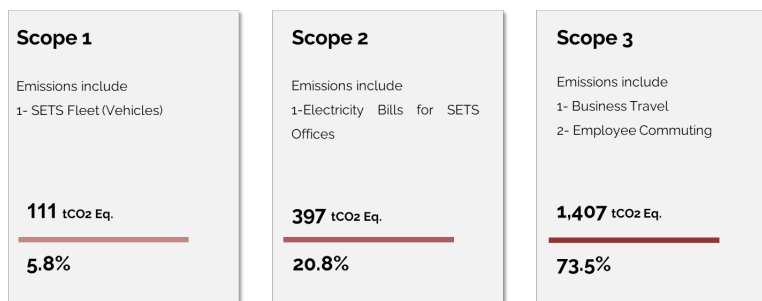


Figure 3 Emissions by Scopes

## 3. Geographical Distribution

The geographical analysis shows how emissions are distributed across SETS' regional operations.



Figure 4 Geographical Distribution

## 4. Baseline Cover Emissions Across 3 Scopes

This figure identifies the **Green House Gases (GHG)** protocol emissions by scope.

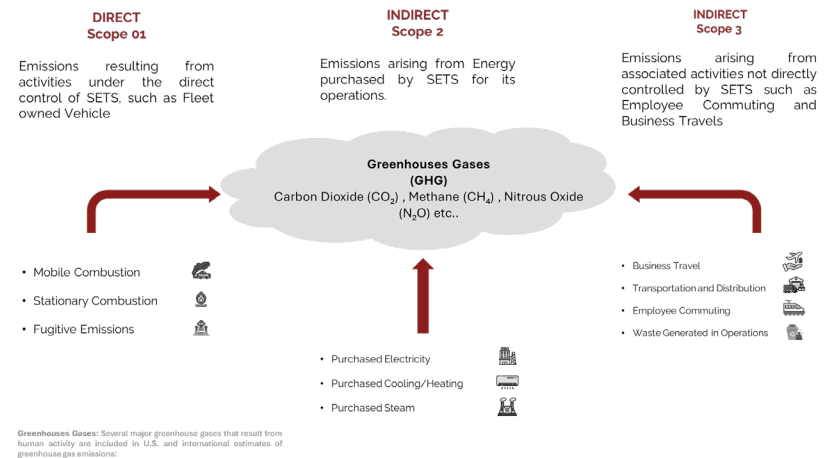


Figure 5 Baseline Emissions Across 3 Scopes

## 5. Carbon Emissions Intensity Benchmark

SETS' emissions intensity of **2.18 tCO<sub>2</sub> Eq. per Employee** is within the lower range of the **Consulting Sector** benchmark (3.80–4.20 tCO<sub>2</sub> Eq. per Employee). This shows SETS with a **relatively low carbon footprint** compared to peers like **WSP Global** and **EIB Group**, providing a basis for **tracking progress** and **driving carbon reduction initiatives**.

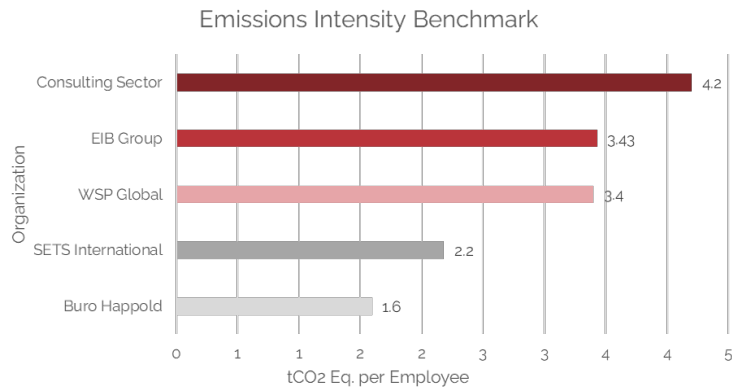


Figure 6 Emission Intensity Benchmark

## 6. Real-World Equivalents of SETS' Carbon Footprint

To better understand the environmental impact of SETS' operations, we have translated our **carbon footprint of 1,915 tCO<sub>2</sub> Eq.** into real-world equivalents.



Figure 7 Carbon Footprint

## 7. Recommendations and Mitigation Plan

SETS' carbon footprint can be effectively reduced through a combination of **behavioral change**, **energy transition (renewable energy)**, and **long-term decarbonization measures**.

- **Promote Sustainable Workplace Practices:**
  - Implement awareness campaigns and energy-efficient behaviors to reduce electricity consumption and waste, directly lowering office-related emissions.
- **Reduce Employee Commuting Emissions:**
  - Encourage public transport use and introduce limited remote-working arrangements to significantly cut emissions from daily commuting.
- **Transition to Clean Energy and Efficient Offices:**
  - Implement renewable energy solar PV systems and upgrade office energy systems (Lighting, HVAC) to reduce reliance on grid electricity and improve overall efficiency.
- **Offset Residual Emissions through Nature-Based Solutions:**
  - Support tree-planting initiatives to compensate for emissions that cannot be eliminated in the short term.
- **Electrify the Company Vehicle Fleet:**
  - Gradually replace conventional vehicles with electric vehicles to eliminate fleet fuel emissions and support long-term decarbonization.

## 8. Carbon Offset & Emissions Reduction Initiatives - 2025

As part of SETS' commitment to environmental sustainability, the company has conducted sustainability initiatives to reduce its overall carbon footprint.

### Trees Planting Initiatives - 2025:

- **In Egypt:** SETS planted 100 small lemon and orange trees. These trees, still in their early stages of growth, are expected to sequester approximately **2.2 tons of CO<sub>2</sub> per year**.
- **In Saudi Arabia:** SETS employees participated in tree and seedling planting activities as part of corporate environmental awareness initiatives. While these activities support ecosystem restoration and promote sustainability culture, they are **not considered certified carbon offsets**.

## 9. Exclusions

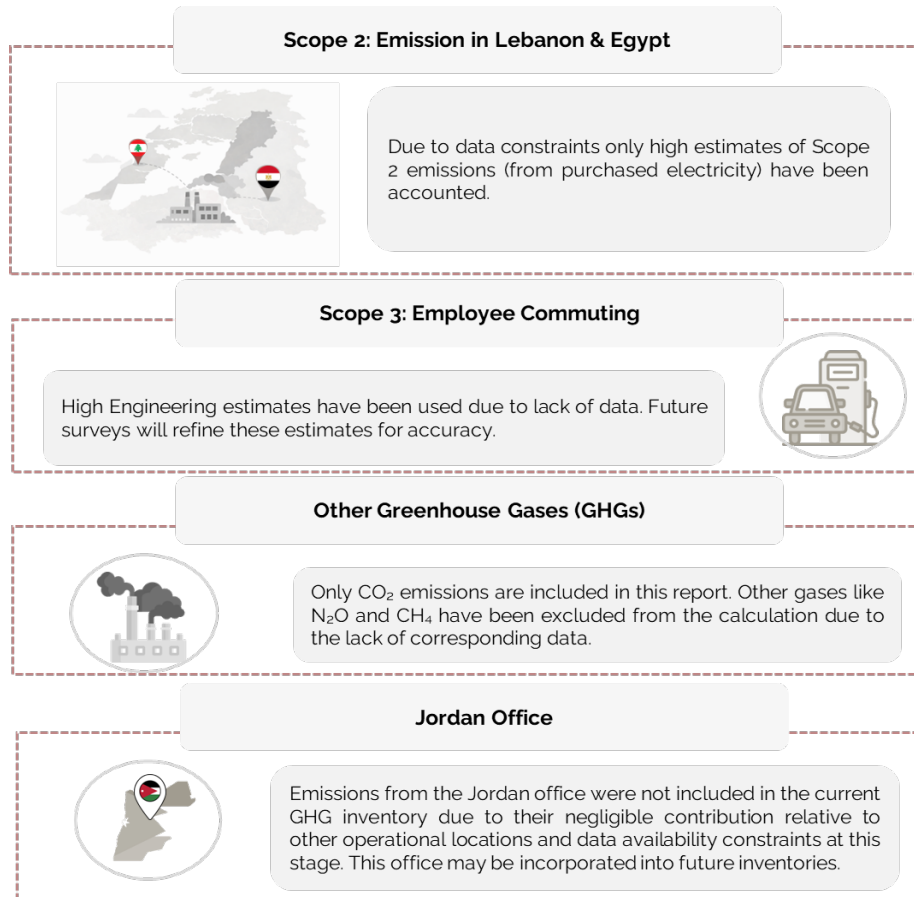


Figure 8 Exclusions